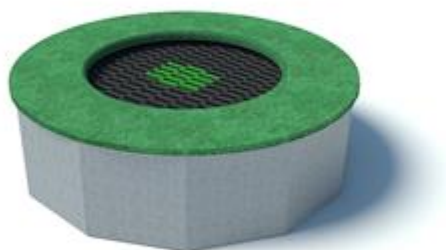


Catalogue: **Park & Playground Equipments**

Category:

Code: **PE33600**



Description:

Round ground trampoline, perfect for public areas such as parks, schools, playgrounds, sports facilities and other types of recreational areas. Combined with a polyurethane surface, it will allow you to create interesting color effects in the playground. The product can be assembled independently and is also suitable as an element of larger sets. The jumping surface is made of special non-slip and weather-resistant plastic blocks that form a carpet. Suitable surfaces for installation are lawn, artificial grass, bark, turf, soil, growing mats, polyurethane surfaces, SBR/EPDM tiles and rubber mulch, while loose surfaces such as wood chips, sand, gravel and chips are acceptable but not recommended.

Available in three versions:

- Small Version: Dimensions: Ø 149 x 45 cm - Safety zone: Ø 384 cm - Jumping surface: Ø 84 cm
- Medium Version: Dimensions: Ø 171 x 45 cm - Safety zone: Ø 404 cm - Jumping surface: Ø 104 cm
- Large Version: Dimensions: Ø 228 x 45 cm - Safety zone: Ø 557 cm - Jumping surface: Ø 157 cm

---

Allegati:

